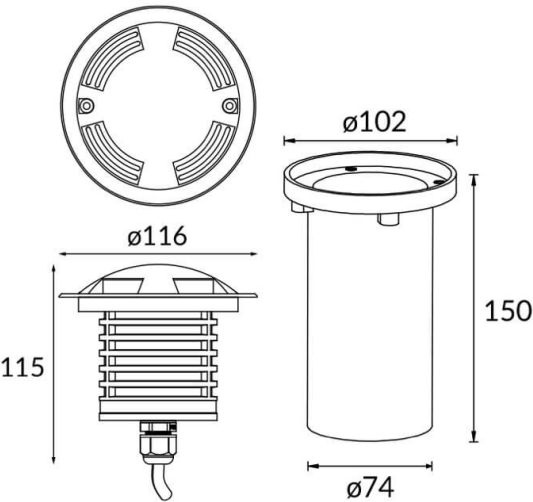
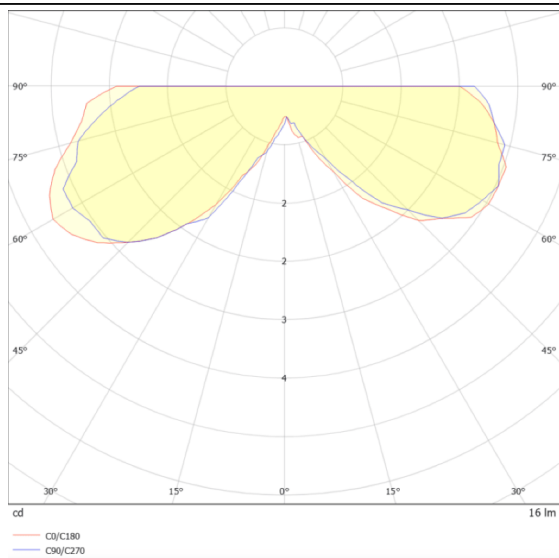


Esquema



Curva fotométrica

**MARK-L**

Código artículo	86.OIN6.3331.03
Tipo de producto	Outdoor
Categoría	Empotrables de suelo
Familia	MARK
Subfamilia	MARK-L

Pictograms

Producto	
Potencia real (W)	Die Cast Aluminium Body, Front Ring stainless Steel, Tempered Glass Cover
Flujo luminoso real (lm)	Die Cast Aluminium Body, Front Ring stainless Steel, Tempered Glass Cover
Eficacia luminosa (lm/W)	Die Cast Aluminium Body, Front Ring stainless Steel, Tempered Glass Cover
Ángulo de apertura	Die Cast Aluminium Body, Front Ring stainless Steel, Tempered Glass Cover
Life time (h)	Die Cast Aluminium Body, Front Ring stainless Steel, Tempered Glass Cover
IP	Die Cast Aluminium Body, Front Ring stainless Steel, Tempered Glass Cover
Operating temperature	Die Cast Aluminium Body, Front Ring stainless Steel, Tempered Glass Cover
Electrical feeding	Die Cast Aluminium Body, Front Ring stainless Steel, Tempered Glass Cover
Equipo	ON-OFF
Temperatura de color (K)	3000
Consistencia de color (SDCM)	SDCM<3
CRI	80
IK	10